



 + 91 92659 63551  [WWW.AAIJIDEVELOPER.COM](http://WWW.AAIJIDEVELOPER.COM)

# ABOUT US AAJI GROUP

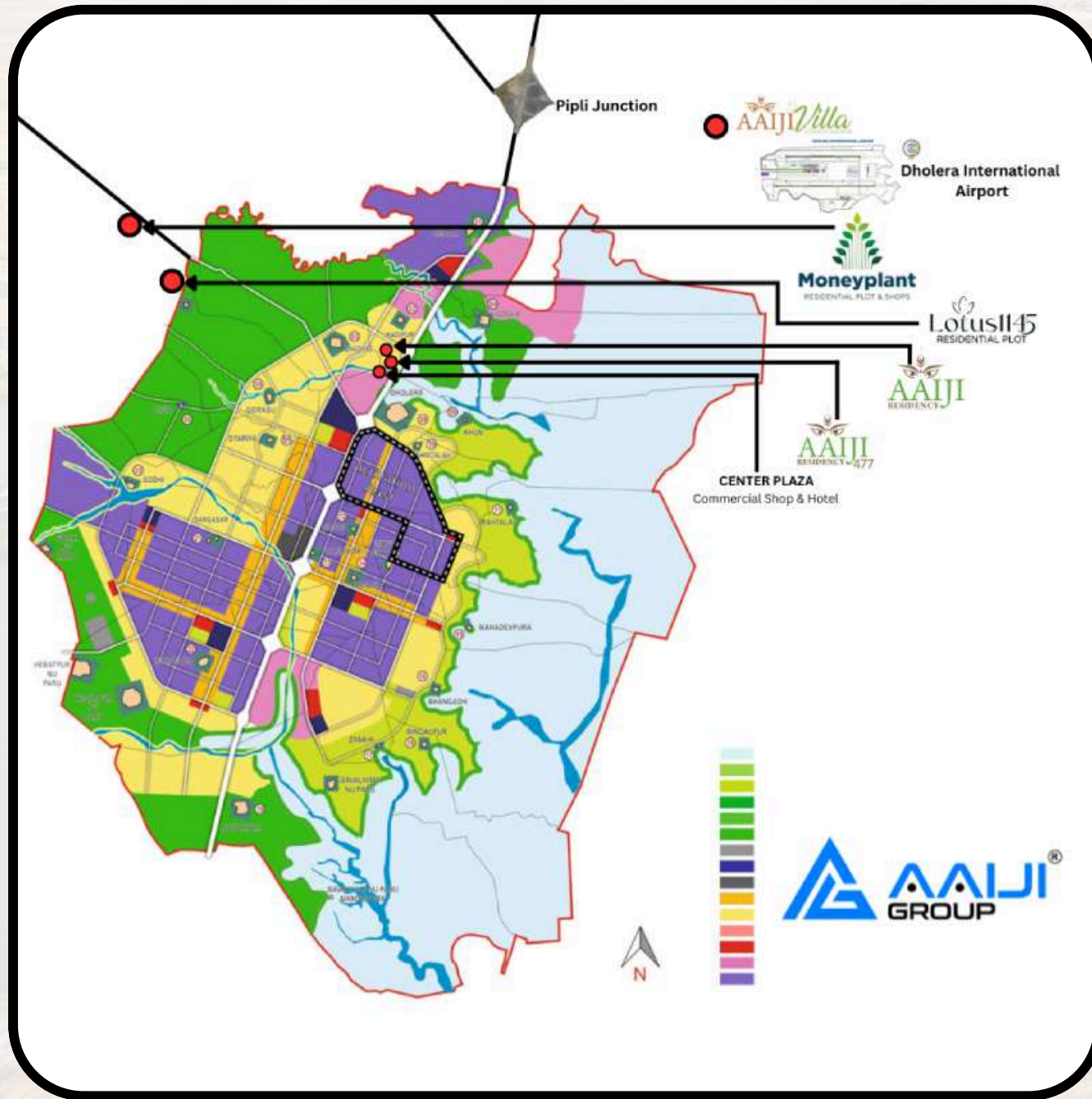
As the most reliable and trusted brand in Dholera, Aaji Developer stands at the forefront of real estate development. We are committed to providing unparalleled investment solutions in land and plots.

Our steadfast commitment to excellence has earned us the trust and loyalty of our valued customers, making us one of the fastest-growing real estate developers in Dholera. At Aaji Developer, we offer comprehensive investment solutions that cater to all your needs, ensuring a seamless and rewarding experience.

With a focus on transparency, integrity, and customer satisfaction, we strive to exceed expectations in every project we undertake. Experience the difference with Aaji Developer and embark on your journey towards unparalleled success in Dholera's thriving real estate market.



# AAIJI GROUP PROJECTS



**AAIJI**  
RESIDENCY

**Lotus1145**  
RESIDENTIAL PLOT

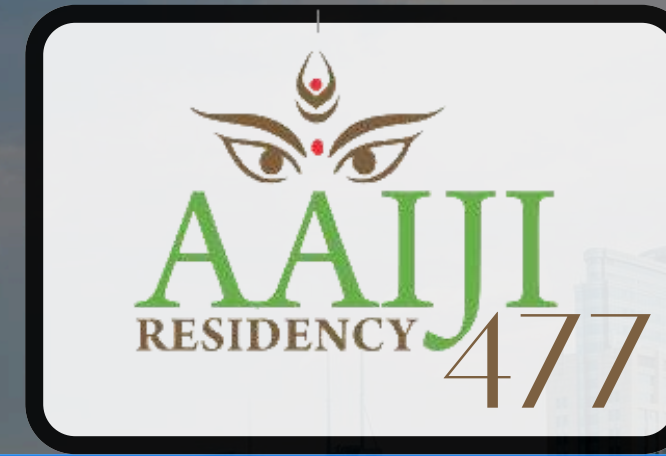
**Moneyplant**  
RESIDENTIAL PLOT & SHOPS

**AAIJI**  
RESIDENCY **477**

**AAIJI Villa**  
LUXURIOUS LIVING SPACE



CENTER PLAZA



# **AAIJI RESIDENCY 477**

RERA REGISTERED PROJECT BY AAIJI GROUP

RESIDENTIAL ZONE

TP1A2

VILLAGE: KADIPUR

PROJECT ON 55 MT TP ROAD

DHOLERA SIR

# PROJECT LAYOUT

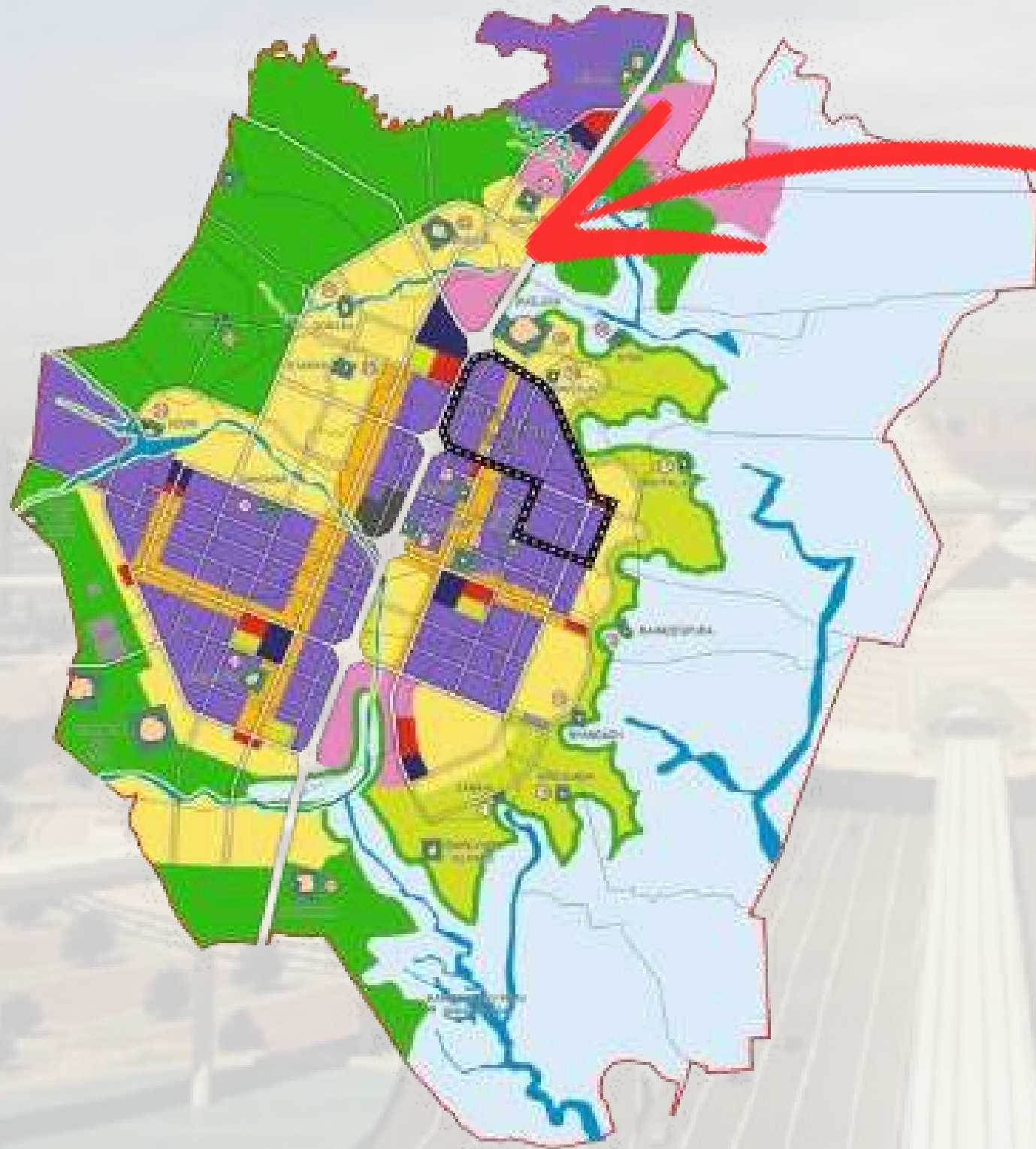


PLOT NO	SUBER BUILTUP AREA (SQYD)	SUBER BUILTUP AREA (SQFT)
1A	1445.84	13012.56
1B	1077.95	9701.55
2A	859.84	7738.56
2B	1099.77	9897.93
3	775.53	6979.77
4	486.63	4379.67
5	485.66	4370.94
6	376.99	3392.91
7	490.1	4410.9
8	490.1	4410.9
9	376.99	3392.91
10	500.49	4504.41
11	510.5	4594.5
12	376.99	3392.91
13	490.1	4410.9
14	490.1	4410.9
15	376.99	3392.91
16	376.99	3392.91
17	376.99	3392.91
18	376.99	3392.91
19	376.99	3392.91
20	709.02	6381.18

# LOCATION ADVANTAGES

- On 55 Meter wide TP Road in Residential Zone
- 0 kms from 250 Meters Expressway
- 0 kms from Metro
- 2 minutes from ABCD Building, Dholera SIR
- 1 minute from Ambli City Center
- 5 minutes from Activation Area
- 7 minutes from Dholera International Airport
- Inside TP 1 Dholera SIR
- 2 minutes from Dholera City Center

# KEY LOCATION



  
**AAIJI**  
RESIDENCY **477**

# DHOLERA SIR DEVELOPEMENT



**GUJARAT TRADE CENTER  
GTC**



**DHOLERA  
INTERNATIONAL AIRPORT**



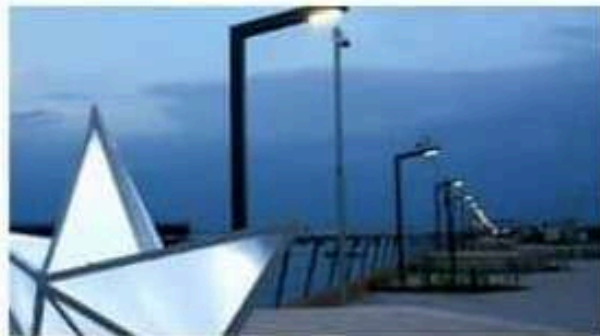
**10 LANE - AHMEDABAD TO  
DHOLERA EXPRESSWAY**



**MRTS - METRO  
AHMEDABAD-DHOLERA**



**BRTS**



**RIVERFRONT  
ACTIVATION AREA**



**ABCD BUILDING  
SINGLE WINDOW CLEARANCE**



**DHOLERA  
SEA PORT**



**WORLD'S LARGEST  
5000MW SOLAR PARK**



**CITY CENTER  
COMMERCIAL AREA**



**VEDANTA - FOXCONN  
SEMICONDUCTOR PLANT**



**AVIATION & DEFENCE ZONE  
MRO HUB**



**LARGE SCALE  
MANUFACTURING UNITS**



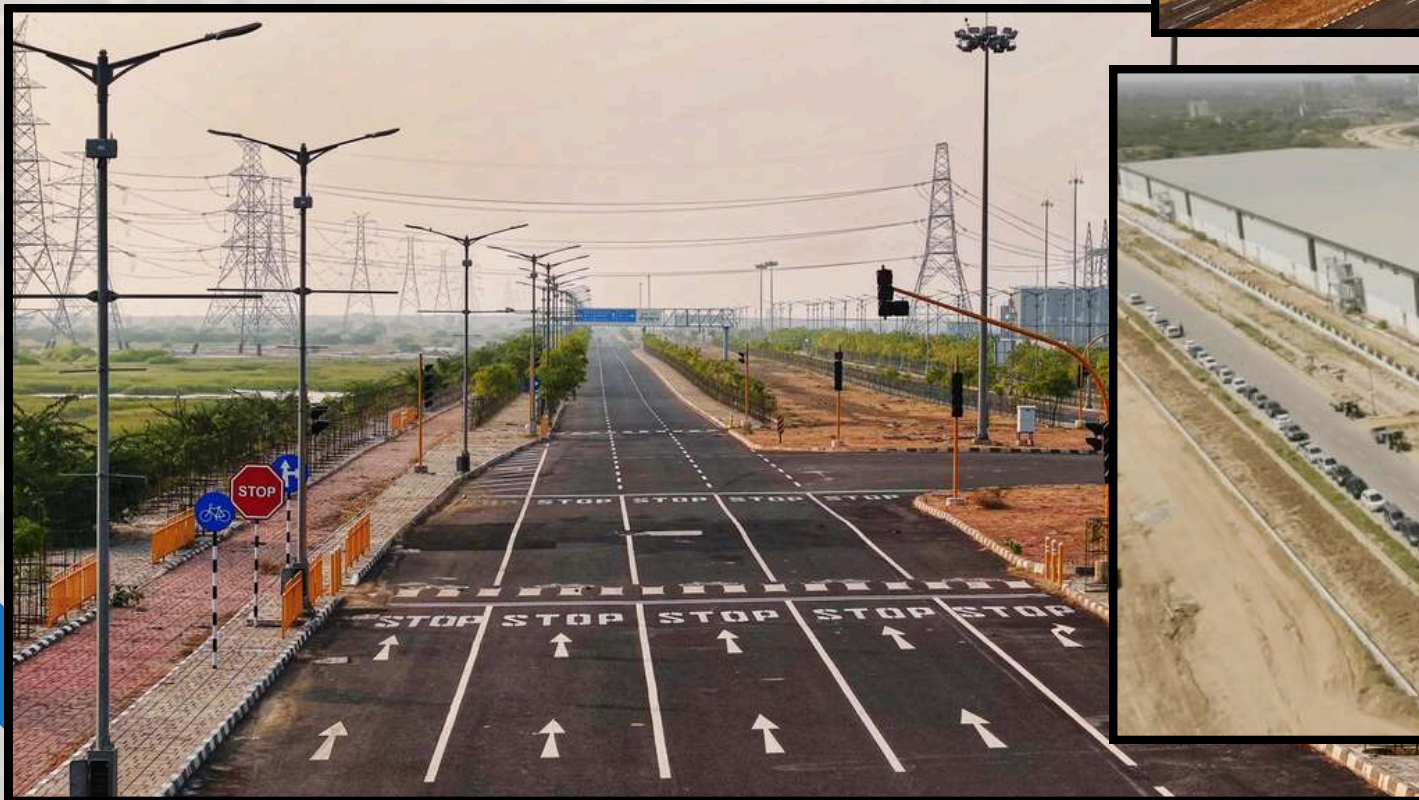
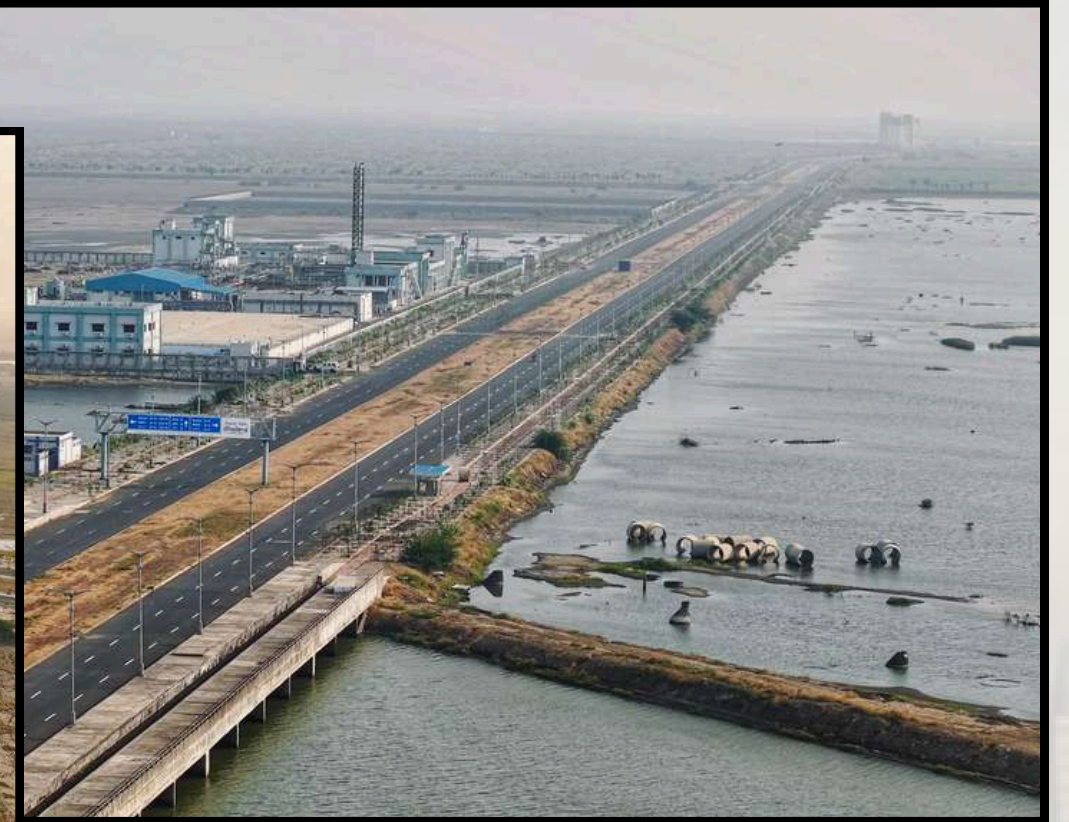
**SUPER SPECIALITY  
HOSPITAL**



**MULTI SPORTS  
COMPLEX**



# DHOLERA LATEST DEVELOPEMT






Regd. Office/Corporate Office  
AAJI GROUP

A-1204 Westgate by true value, Near YMCA Club, Makarba,  
SG Highway, Ahmedabad, Gujarat - 380051

 [weaaijigroup@gmail.com](mailto:weaaijigroup@gmail.com)

 +91 92659 63551

 [www.aaijideveloper.com/](http://www.aaijideveloper.com/)